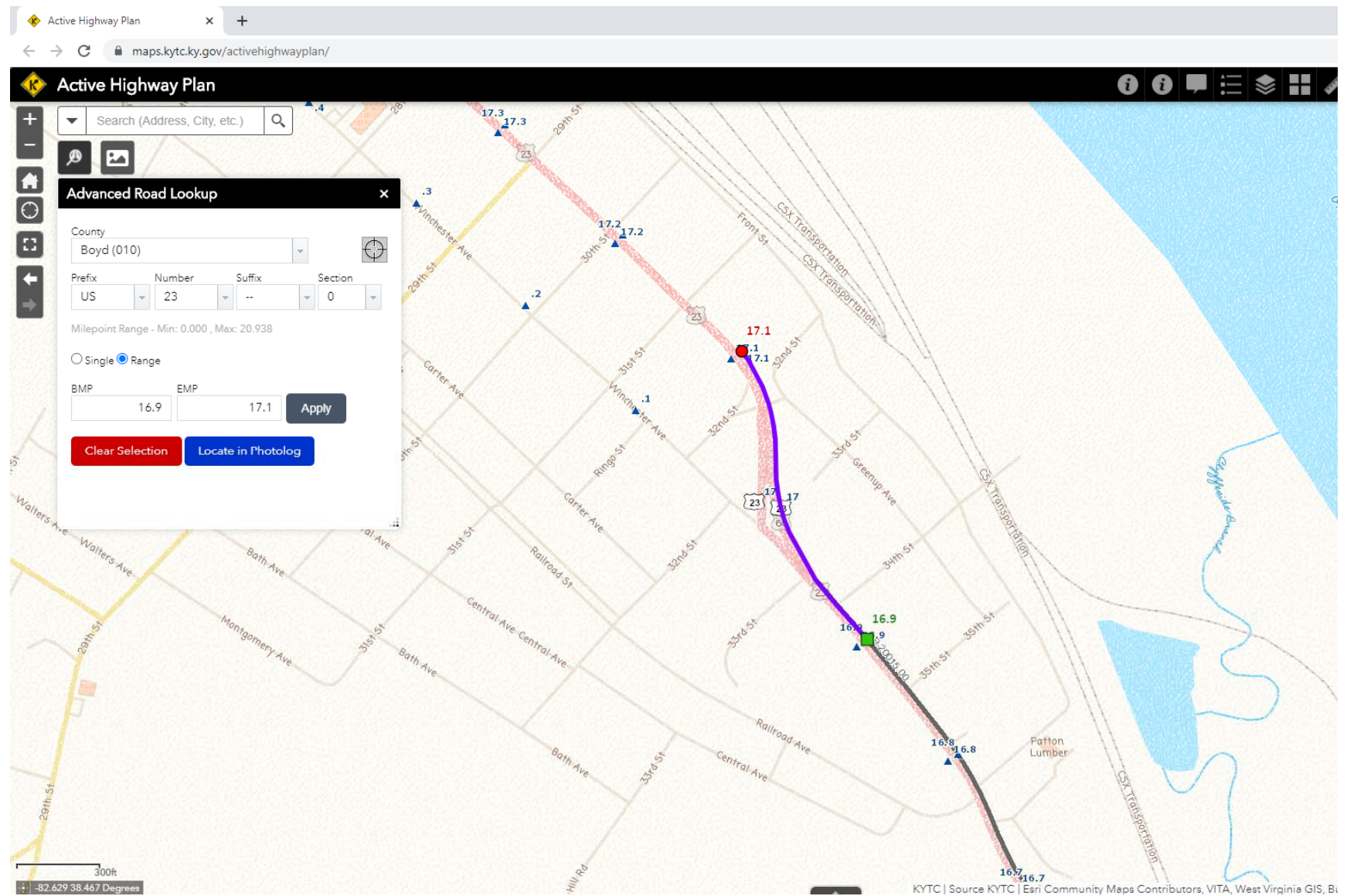




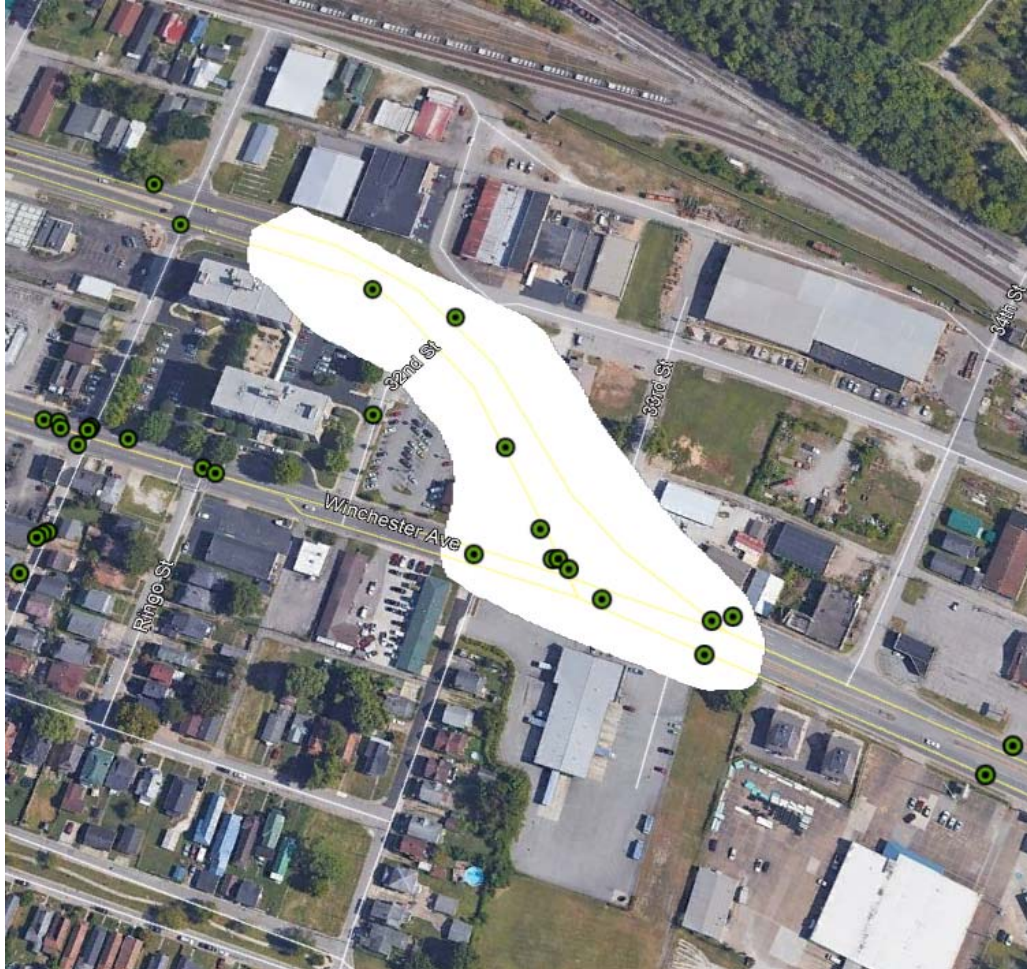
Appendix B.

Crash Data and EEC Analysis

US 23 (MP 16.9 TO MP 17.1)



US 23 Greenup and Winchester Ave. South (MP 16.9 to MP 17.1)



US 23 – Greenup – Winchester Ave. - SOUTH

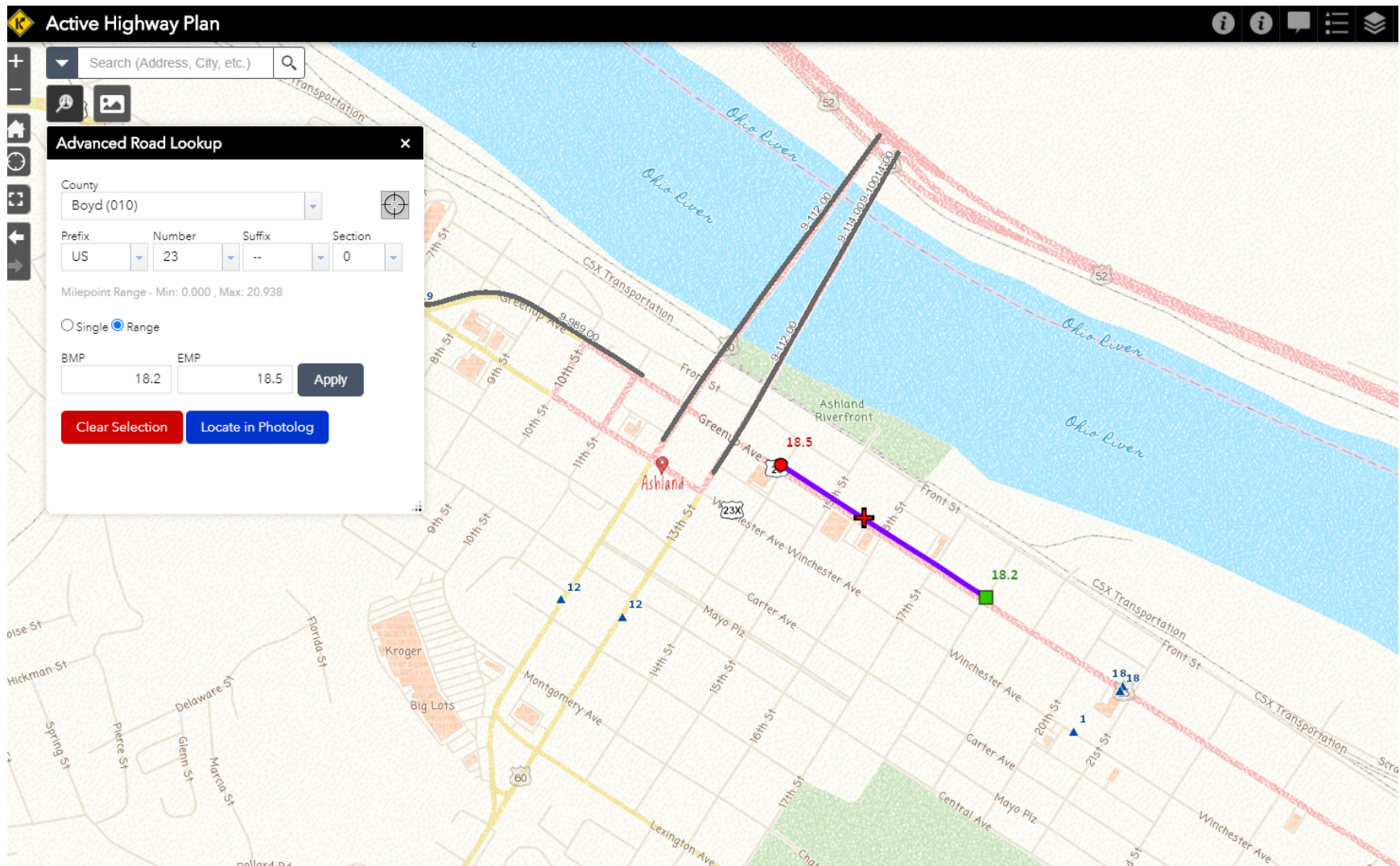
Total Crashes: 12

Injury Crashes: 2

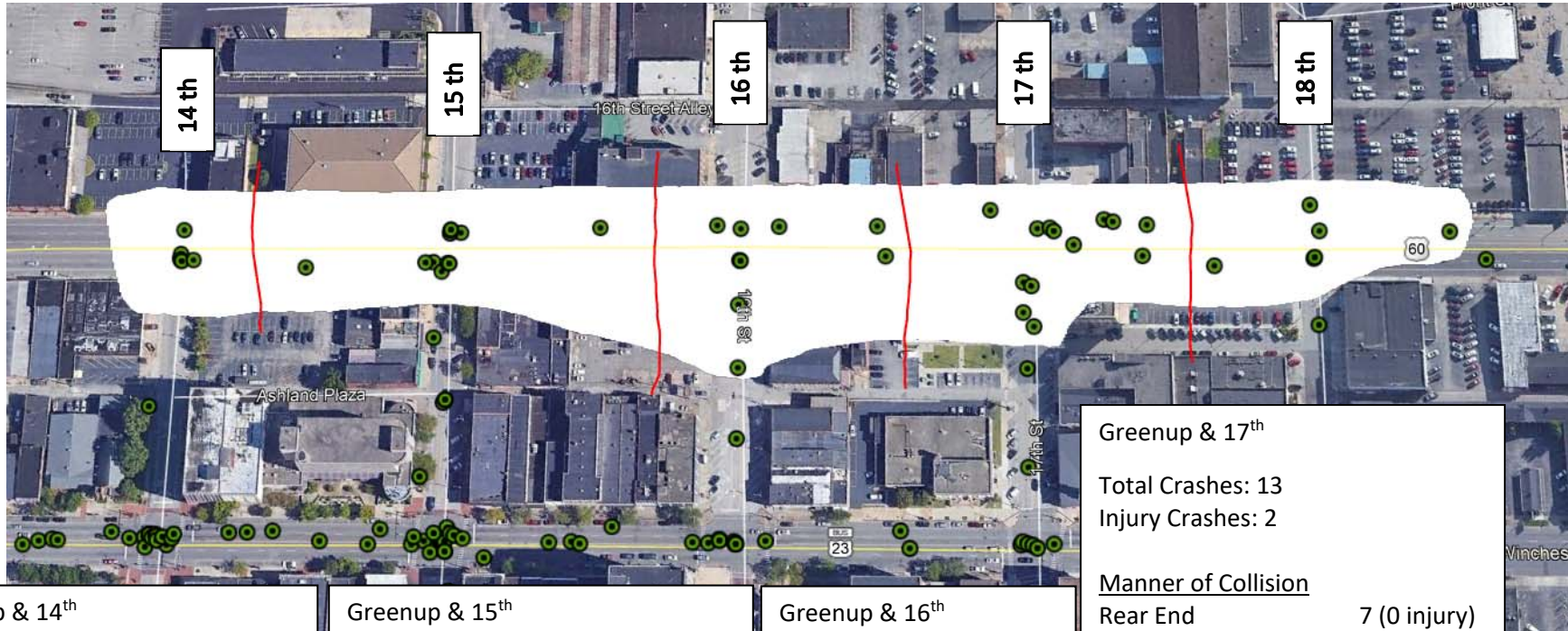
Manner of Collision

| | |
|-----------------|--------------|
| Rear End: | 4 (0 injury) |
| Sideswipe Same: | 3 (0 injury) |
| Single Vehicle | 3 (2 injury) |
| Angle Crashes: | 2 (0 injury) |

US 23 – Greenup Ave. (MP 18.2 TO 18.5)



US 23 – Greenup Ave. (MP 18.2 TO 18.5)



Greenup & 14th

Total Crashes: 6

Injury Crashes: 1

Manner of Collision

| | |
|---------------------|--------------|
| Single Vehicle | 2 (0 injury) |
| Sideswipe Same: | 1 (0 injury) |
| Angle Crashes: | 1 (1 injury) |
| Backing: | 1 (0 injury) |
| Opposing Left Turn: | 1 (0 injury) |

Greenup & 15th

Total Crashes: 11

Injury Crashes: 1

Manner of Collision

| | |
|---------------------|--------------|
| Rear End | 6 (1 injury) |
| Sideswipe Same: | 3 (0 injury) |
| Backing: | 1 (0 injury) |
| Opposing Left Turn: | 1 (0 injury) |

Greenup & 16th

Total Crashes: 9

Injury Crashes: 0

Manner of Collision

| | |
|-----------------|---|
| Rear End | 4 |
| Backing: | 2 |
| Angle | 2 |
| Sideswipe Same: | 1 |

Greenup & 17th

Total Crashes: 13

Injury Crashes: 2

Manner of Collision

| | |
|-----------------|--------------|
| Rear End | 7 (0 injury) |
| Sideswipe Same: | 2 (0 injury) |
| Single Vehicle: | 2 (2 injury) |
| Angle: | 1 (0 injury) |
| Head on: | 1 (0 injury) |

Greenup & 18th

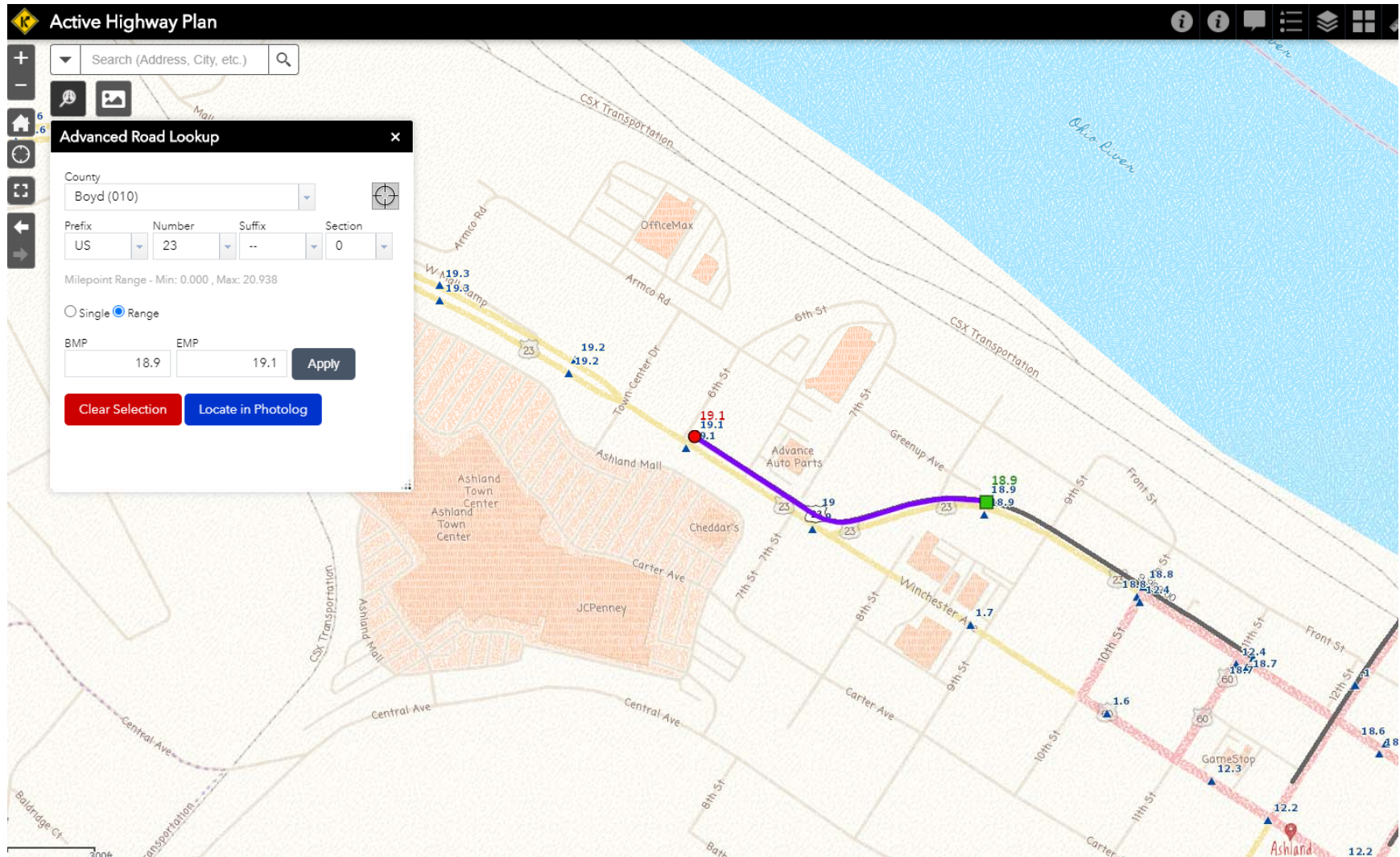
Total Crashes: 6

Injury Crashes: 1

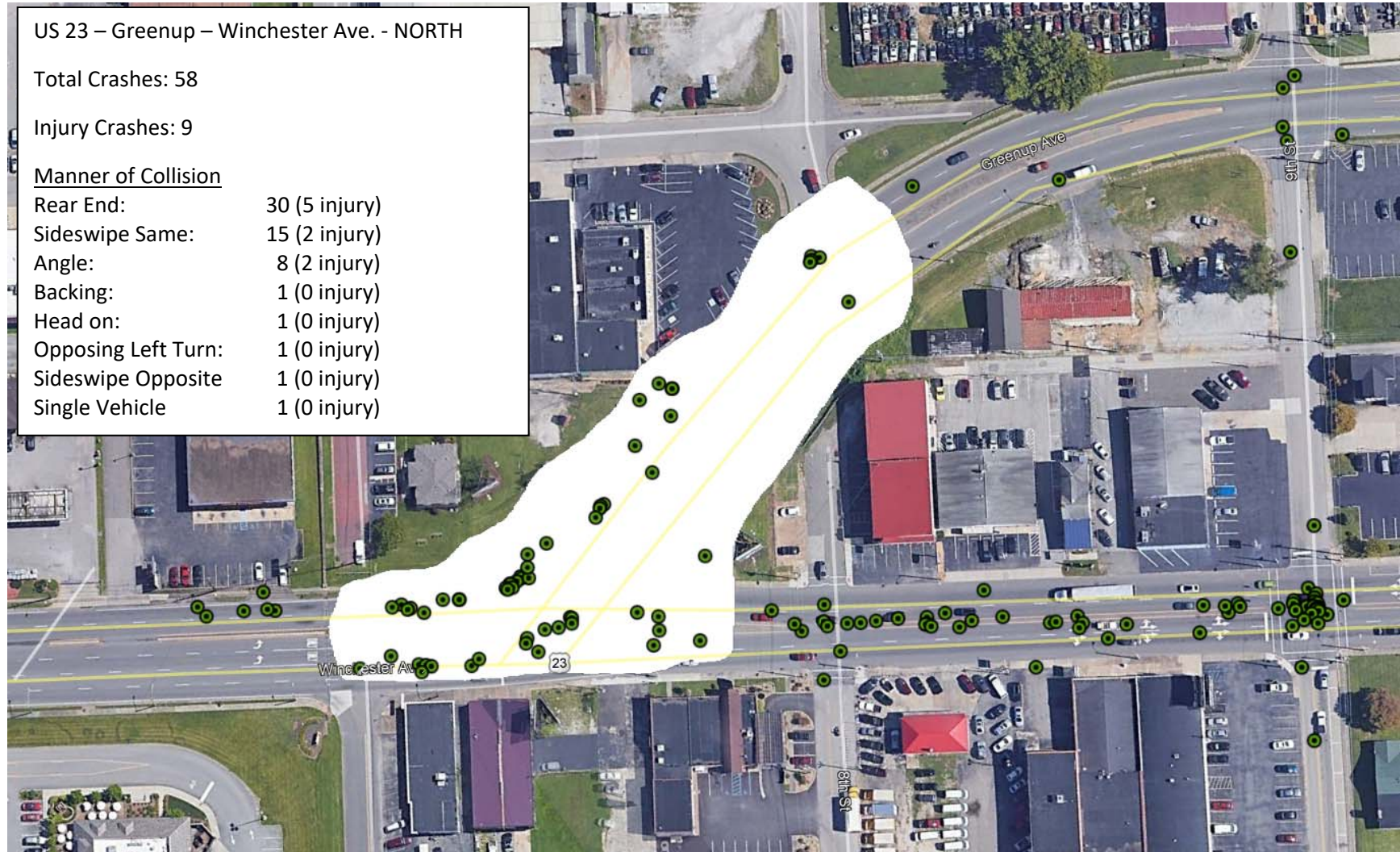
Manner of Collision

| | |
|-----------------|--------------|
| Angle: | 2 (1 injury) |
| Backing: | 2 (0 injury) |
| Sideswipe Same: | 1 (0 injury) |
| Single Vehicle: | 1 (0 injury) |

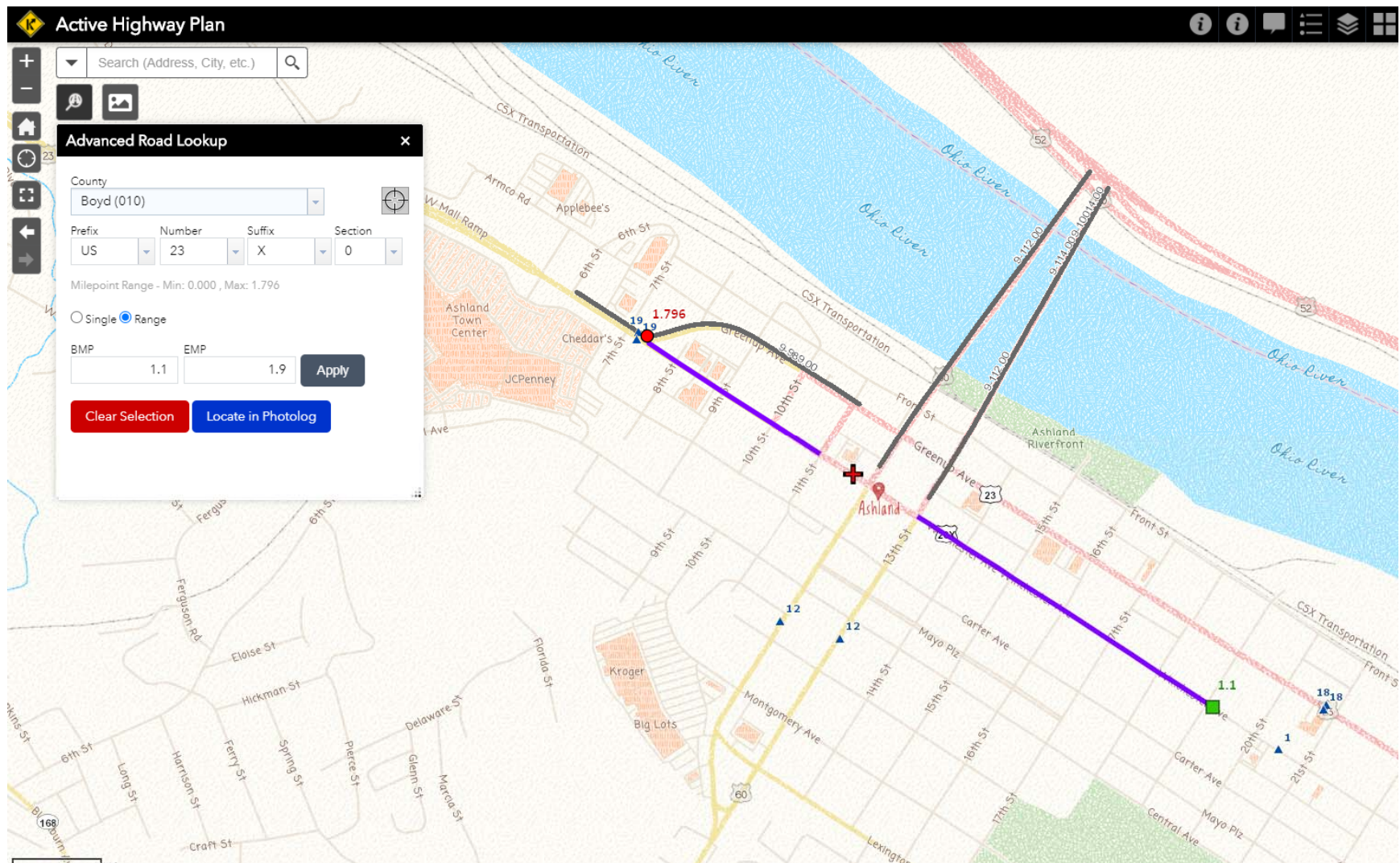
US 23 Greenup and Winchester Ave. North (MP 18.9 to MP 19.1)



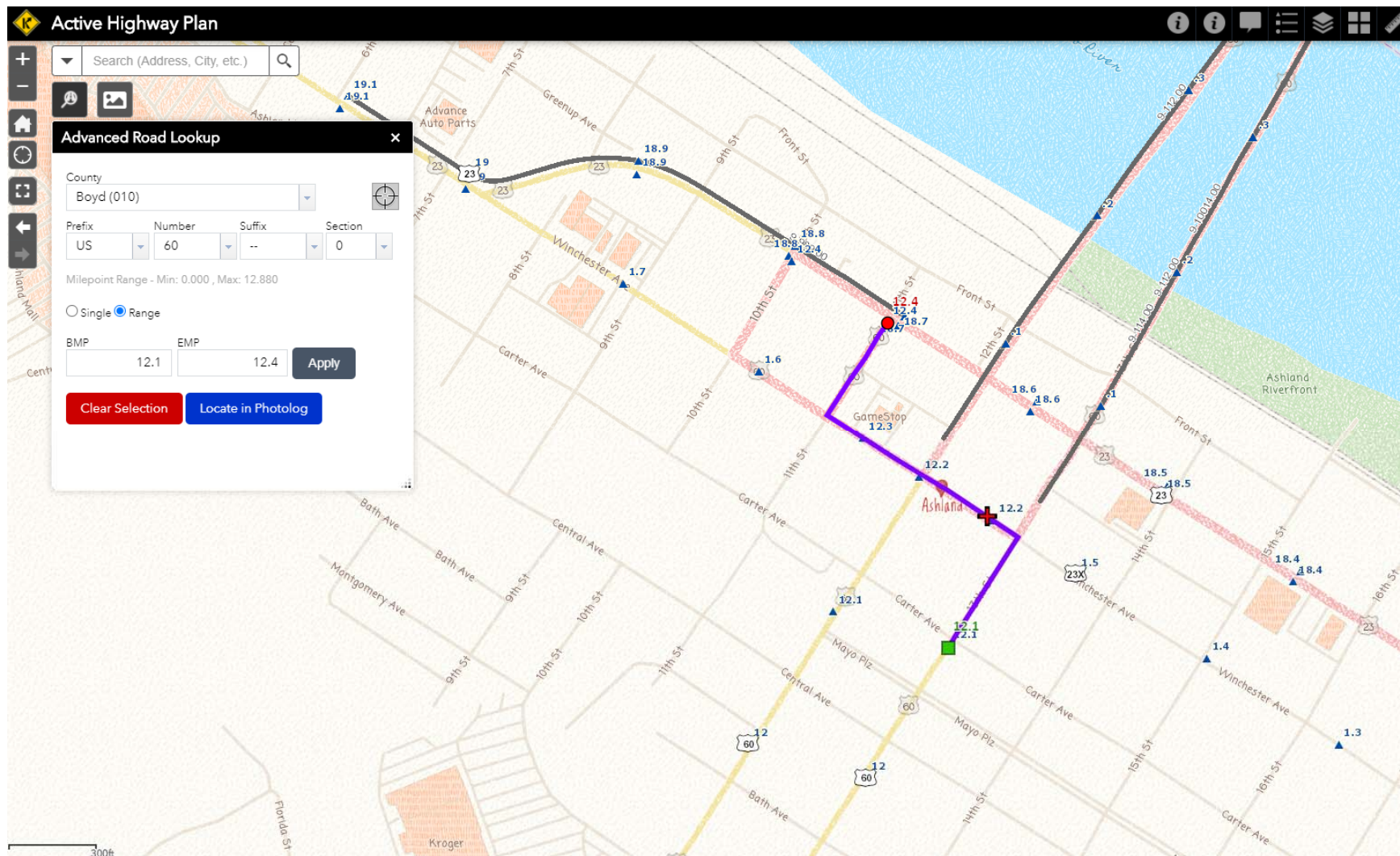
US 23 Greenup and Winchester Ave. North (MP 18.9 to MP 19.1)



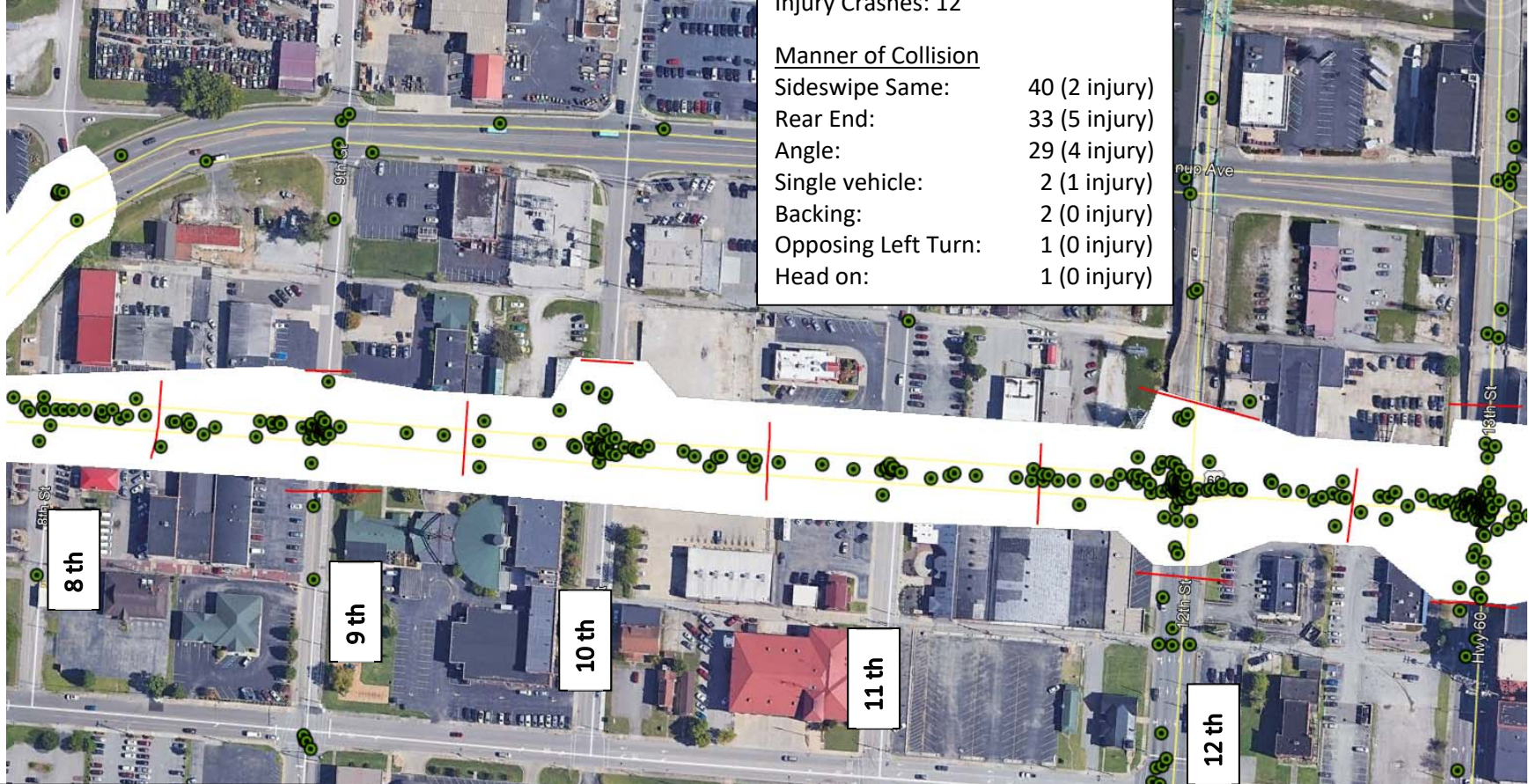
US 23X Winchester Ave (MP 1.1 to MP 1.9)



US 60 (MP 12.1 to MP 12.4)



Winchester Ave.



| | |
|-------------------------------|---------------|
| Winchester & 12 th | |
| Total Crashes: 108 | |
| Injury Crashes: 12 | |
| <u>Manner of Collision</u> | |
| Sideswipe Same: | 40 (2 injury) |
| Rear End: | 33 (5 injury) |
| Angle: | 29 (4 injury) |
| Single vehicle: | 2 (1 injury) |
| Backing: | 2 (0 injury) |
| Opposing Left Turn: | 1 (0 injury) |
| Head on: | 1 (0 injury) |

| | |
|------------------------------|---------------|
| Winchester & 8 th | |
| Total Crashes: 21 | |
| Injury Crashes: 2 | |
| <u>Manner of Collision</u> | |
| Rear End: | 13 (2 injury) |
| Sideswipe Same: | 2 (0 injury) |
| Single vehicle: | 2 (0 injury) |
| Backing: | 2 (0 injury) |
| Angle: | 1 (0 injury) |
| Opposing Left Turn: | 1 (0 injury) |

| | |
|------------------------------|---------------|
| Winchester & 9 th | |
| Total Crashes: 46 | |
| Injury Crashes: 10 | |
| <u>Manner of Collision</u> | |
| Rear End: | 22 (3 injury) |
| Angle: | 16 (5 injury) |
| Sideswipe Same: | 4 (0 injury) |
| Head on: | 2 (1 injury) |
| Single vehicle: | 1 (1 injury) |
| Opposing Left Turn: | 1 (0 injury) |

| | |
|-------------------------------|---------------|
| Winchester & 10 th | |
| Total Crashes: 45 | |
| Injury Crashes: 9 | |
| <u>Manner of Collision</u> | |
| Angle: | 23 (6 injury) |
| Rear End: | 10 (1 injury) |
| Sideswipe Same: | 5 (0 injury) |
| Single vehicle: | 3 (2 injury) |
| Backing: | 2 (0 injury) |
| Opposing Left Turn: | 2 (0 injury) |

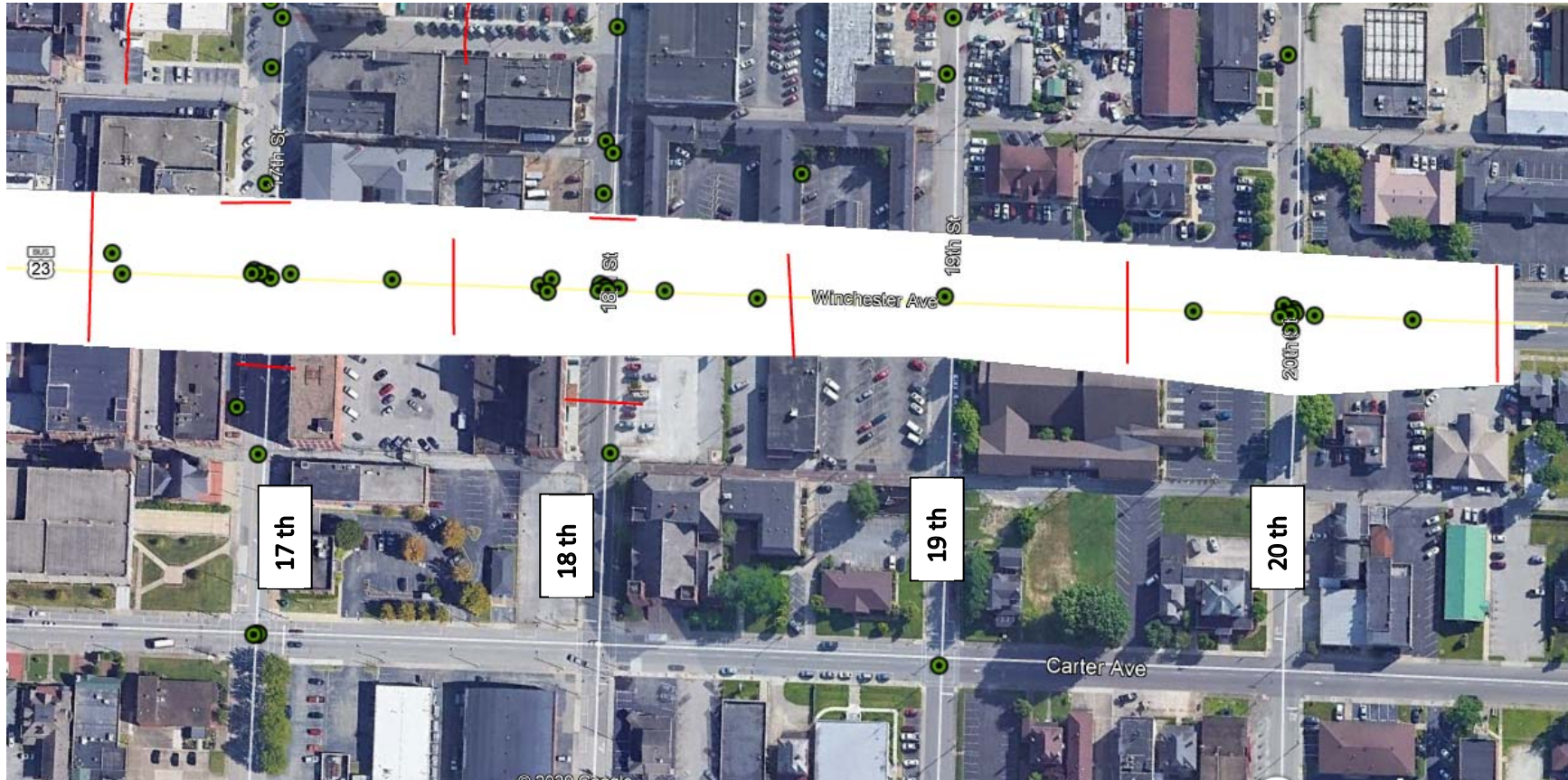
| | |
|-------------------------------|--------------|
| Winchester & 11 th | |
| Total Crashes: 21 | |
| Injury Crashes: 6 | |
| <u>Manner of Collision</u> | |
| Angle: | 7 (3 injury) |
| Rear End: | 6 (1 injury) |
| Sideswipe Same: | 5 (0 injury) |
| Single vehicle: | 3 (2 injury) |

Winchester Ave. (continued)



| | | | |
|----------------------------------|-------------------------------|-------------------------------|----------------------------------|
| Winchester & 13 th | Winchester & 14 th | Winchester & 15 th | Winchester & 16 th |
| Total Crashes: 144 | Total Crashes: 22 | Total Crashes: 25 | Total Crashes: 13 |
| Injury Crashes: 11 | Injury Crashes: 1 | Fatal Crashes: 1 | Injury Crashes: 3 |
| <u>Manner of Collision</u> | <u>Manner of Collision</u> | <u>Manner of Collision</u> | <u>Manner of Collision</u> |
| Sideswipe Same: 86 (1 injury) | Rear End: 11 (0 injury) | Rear End: 10 (0 injury) | Rear End: 6 (3 injury) |
| Angle: 30 (9 injury) | Angle: 5 (1 injury) | Angle: 6 (1 injury) | Angle: 2 (0 injury) |
| Rear End: 23 (0 injury) | Sideswipe Same: 2 (0 injury) | Single vehicle: 3 (2 injury) | Sideswipe Same: 2 (0 injury) |
| Single vehicle: 3 (1 injury) | Single vehicle: 2 (0 injury) | (1 fatal) | Single vehicle: 1 (0 injury) |
| Backing: 1 (0 injury) | Backing: 2 (0 injury) | Backing: 3 (0 injury) | Backing: 1 (0 injury) |
| Sideswipe Opposite: 1 (0 injury) | | Sideswipe Same: 2 (0 injury) | Opposing Left Turn: 1 (0 injury) |
| | | Head on: 1 (1 injury) | |

Winchester Ave. (continued)



Winchester & 17th

Total Crashes: 9

Injury Crashes: 0

Manner of Collision

| | |
|-----------------|---|
| Rear End: | 4 |
| Angle: | 3 |
| Single vehicle: | 2 |

Winchester & 18th

Total Crashes: 11

Injury Crashes: 1

Manner of Collision

| | |
|---------------------|--------------|
| Rear End: | 6 (1 injury) |
| Angle: | 2 (0 injury) |
| Sideswipe Same: | 1 (0 injury) |
| Single vehicle: | 1 (0 injury) |
| Sideswipe Opposite: | 1 (0 injury) |

Winchester & 19th

Total Crashes: 1

Injury Crashes: 0

Manner of Collision

| | |
|--------|---|
| Angle: | 1 |
|--------|---|

Winchester & 20th

Total Crashes: 11

Injury Crashes: 2

Manner of Collision

| | |
|-----------------|--------------|
| Rear End: | 6 (1 injury) |
| Angle: | 2 (1 injury) |
| Sideswipe Same: | 2 (0 injury) |
| Head on: | 1 (0 injury) |

North Greenup Ave & Winchester Ave
Crash Analysis 2015 - 2019



Greenup Ave

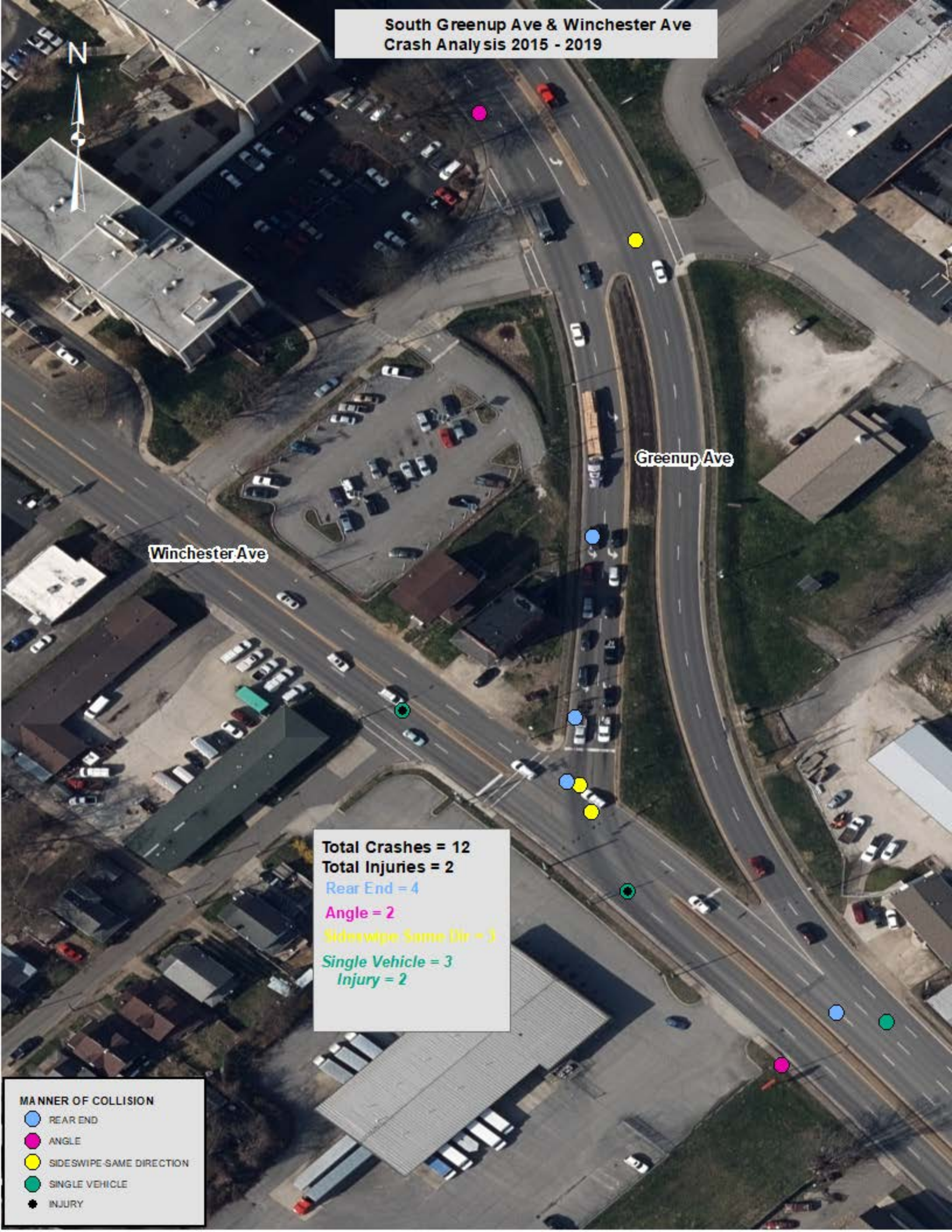
Winchester Ave

Total Crashes = 58
Total Injuries = 9
Rear End = 30
Injury = 5
Angle = 8
Injury = 2
Sideswipe Same Dir = 15
Injury = 2
Opposing Left = 1
Sideswipe Opp Dir = 1
Single Vehicle = 1
Backing = 2

MANNER OF COLLISION

-  REAR END
-  ANGLE
-  SIDESWIPE SAME DIRECTION
-  OPPOSING LEFT TURN
-  SIDESWIPE OPPOSITE DIRECTION
-  SINGLE VEHICLE
-  HEAD ON
-  BACKING
-  INJURY

South Greenup Ave & Winchester Ave
Crash Analysis 2015 - 2019



MANNER OF COLLISION

- REAR END
- ANGLE
- SIDESWIPE-SAME DIRECTION
- SINGLE VEHICLE
- INJURY

US 23 (Greenup Ave) & 14th Street
Crash Analysis 2015 - 2019



14th Street






US 23

Greenup Ave

Total Crashes = 6
Total Injuries = 1

Angle = 1
Injury = 1
Sideswipe Same Dir = 1
Opposing Left = 1
Single Vehicle = 2
Backing = 1

MANNER OF COLLISION

-  ANGLE
-  SIDESWIPE SAME DIRECTION
-  OPPOSING LEFT TURN
-  SINGLE VEHICLE
-  BACKING
-  INJURY

US 23 (Greenup Ave) & 15th Street
Crash Analysis 2015 - 2019



15th Street

US 23

Greenup Ave

Total Crashes = 11
Total Injuries = 1






Rear End = 6
Injury = 1

Sideswipe Same Dir = 3

Opposing Left = 1

Backing = 1

MANNER OF COLLISION

-  REAR END
-  SIDESWIPE-SAME DIRECTION
-  OPPOSING LEFT TURN
-  BACKING
-  INJURY

US 23 (Greenup Ave) & 16th Street
Crash Analysis 2015 - 2019



16th Street

US 23

Greenup Ave

Total Crashes = 9
Total Injuries = 0

Rear End = 4

Angle = 2

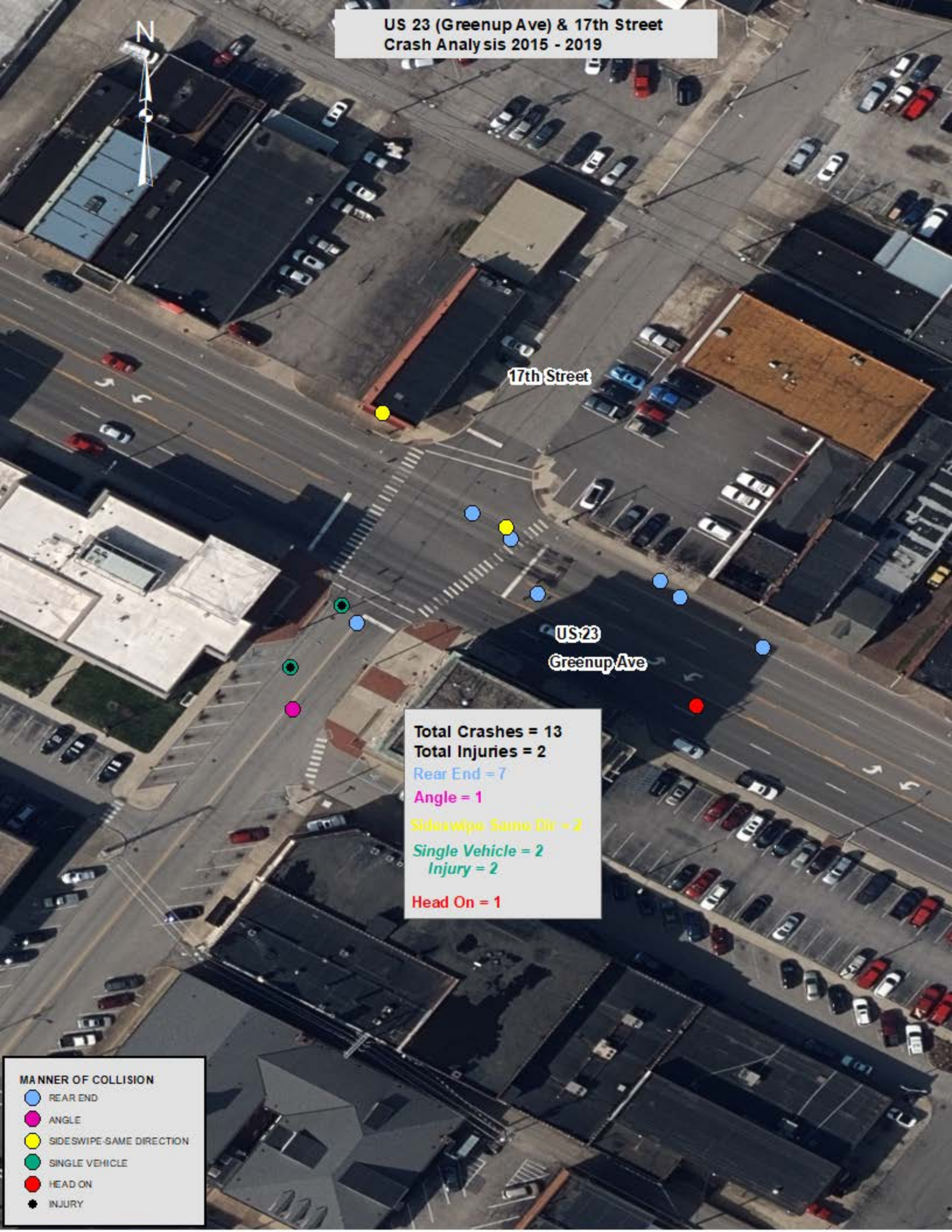
Sideswipe Same Dir = 1

Backing = 2

MANNER OF COLLISION

- REAR END
- ANGLE
- SIDESWIPE-SAME DIRECTION
- BACKING

US 23 (Greenup Ave) & 17th Street
Crash Analysis 2015 - 2019



MANNER OF COLLISION

- REAR END
- ANGLE
- SIDESWIPE-SAME DIRECTION
- SINGLE VEHICLE
- HEAD ON
- INJURY

US 23 (Greenup Ave) & 18th Street
Crash Analysis 2015 - 2019



18th Street

US 23
Greenup Ave

Total Crashes = 6

Total Injuries = 1

Angle = 2

Injury = 1

Sideswipe Same Dir = 1

Single Vehicle = 1

Backing = 2

MANNER OF COLLISION

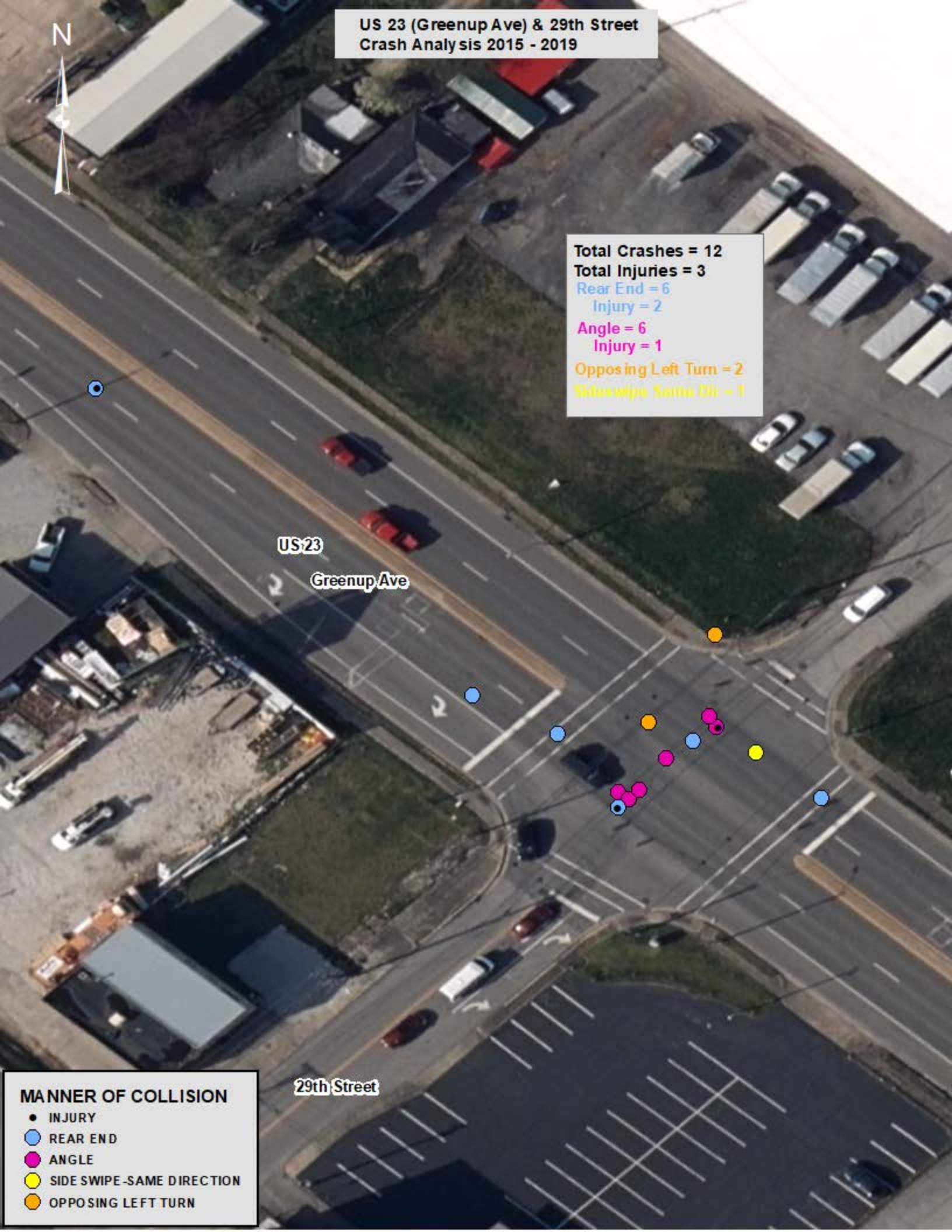
-  REAR END
-  ANGLE
-  SIDESWIPE-SAME DIRECTION
-  OPPOSING LEFT TURN
-  SIDESWIPE-OPPOSITE DIRECTION
-  SINGLE VEHICLE
-  HEAD ON
-  BACKING
-  REAR TO REAR

US 23 (Greenup Ave) & 29th Street
Crash Analysis 2015 - 2019

Total Crashes = 12
Total Injuries = 3
Rear End = 6
Injury = 2
Angle = 6
Injury = 1
Opposing Left Turn = 2
SideSwipe Same Dir = 1

MANNER OF COLLISION

- INJURY
- REAR END
- ANGLE
- SIDE SWIPE-SAME DIRECTION
- OPPOSING LEFT TURN



US 23 (Winchester Ave) & 8th Street
Crash Analysis 2015 - 2019



US 23
Winchester Ave

8th Street

Total Crashes = 21
Total Injuries = 2
Rear End = 13
Injury = 2
Sideswipe Same Dir = 2
Single Vehicle = 2
Backing = 2
Angle = 1
Opposing Left Turn = 1

MANNER OF COLLISION

-  REAR END
-  ANGLE
-  SIDESWIPE SAME DIRECTION
-  OPPOSING LEFT TURN
-  SINGLE VEHICLE
-  BACKING
-  INJURY

US 23 (Winchester Ave) & 9th Street Crash Analysis 2015 - 2019



20 Total Crashes
6 Injuries

US-23

Winchester Ave

9th Street

Total Crashes = 46
Total Injuries = 10

Rear End = 22
Injury = 3

Angle = 16
Injury = 5

Single Vehicle = 1
Injury = 1

Head On = 2
Injury = 1

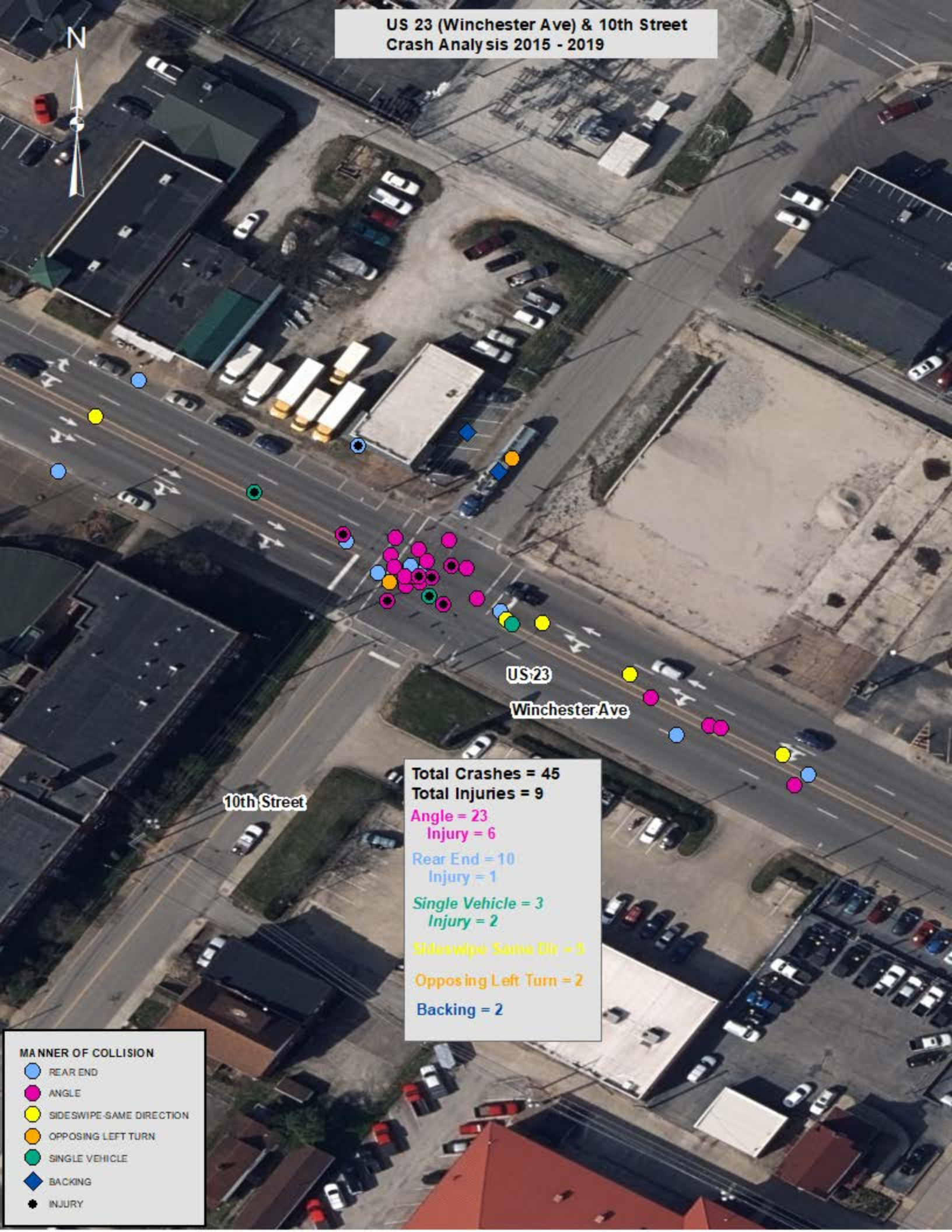
Sideswipe Same Dir = 4

Opposing Left Turn = 1

MANNER OF COLLISION

- REAR END
- ANGLE
- SIDESWIPE-SAME DIRECTION
- OPPOSING LEFT TURN
- SINGLE VEHICLE
- HEAD ON
- INJURY

US 23 (Winchester Ave) & 10th Street
Crash Analysis 2015 - 2019



Total Crashes = 45

Total Injuries = 9

Angle = 23

Injury = 6

Rear End = 10

Injury = 1

Single Vehicle = 3

Injury = 2

Sideswipe Same Dir = 5

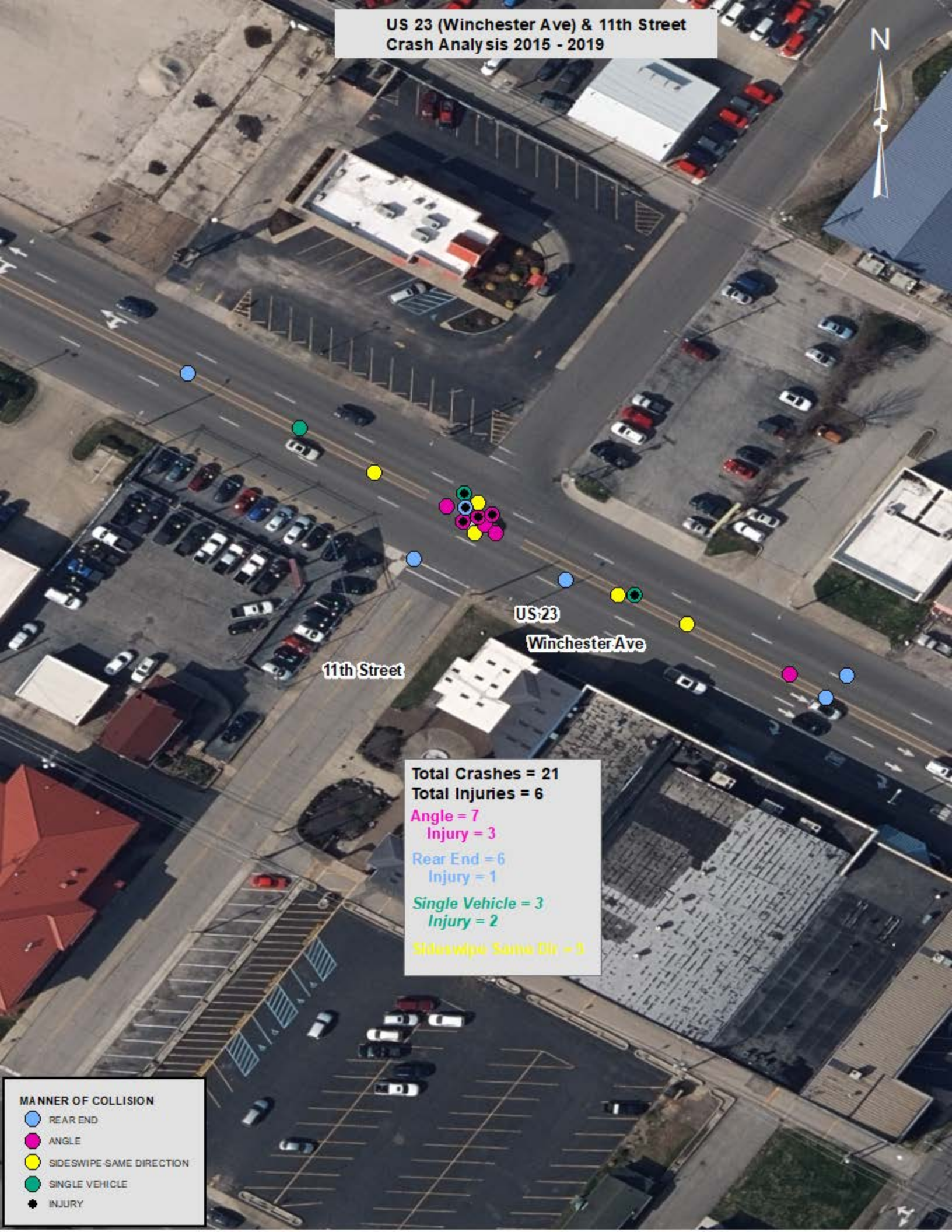
Opposing Left Turn = 2

Backing = 2

MANNER OF COLLISION

- REAR END
- ANGLE
- SIDESWIPE SAME DIRECTION
- OPPOSING LEFT TURN
- SINGLE VEHICLE
- BACKING
- INJURY

US 23 (Winchester Ave) & 11th Street
Crash Analysis 2015 - 2019



11th Street

US 23

Winchester Ave

Total Crashes = 21

Total Injuries = 6

Angle = 7

Injury = 3

Rear End = 6

Injury = 1

Single Vehicle = 3

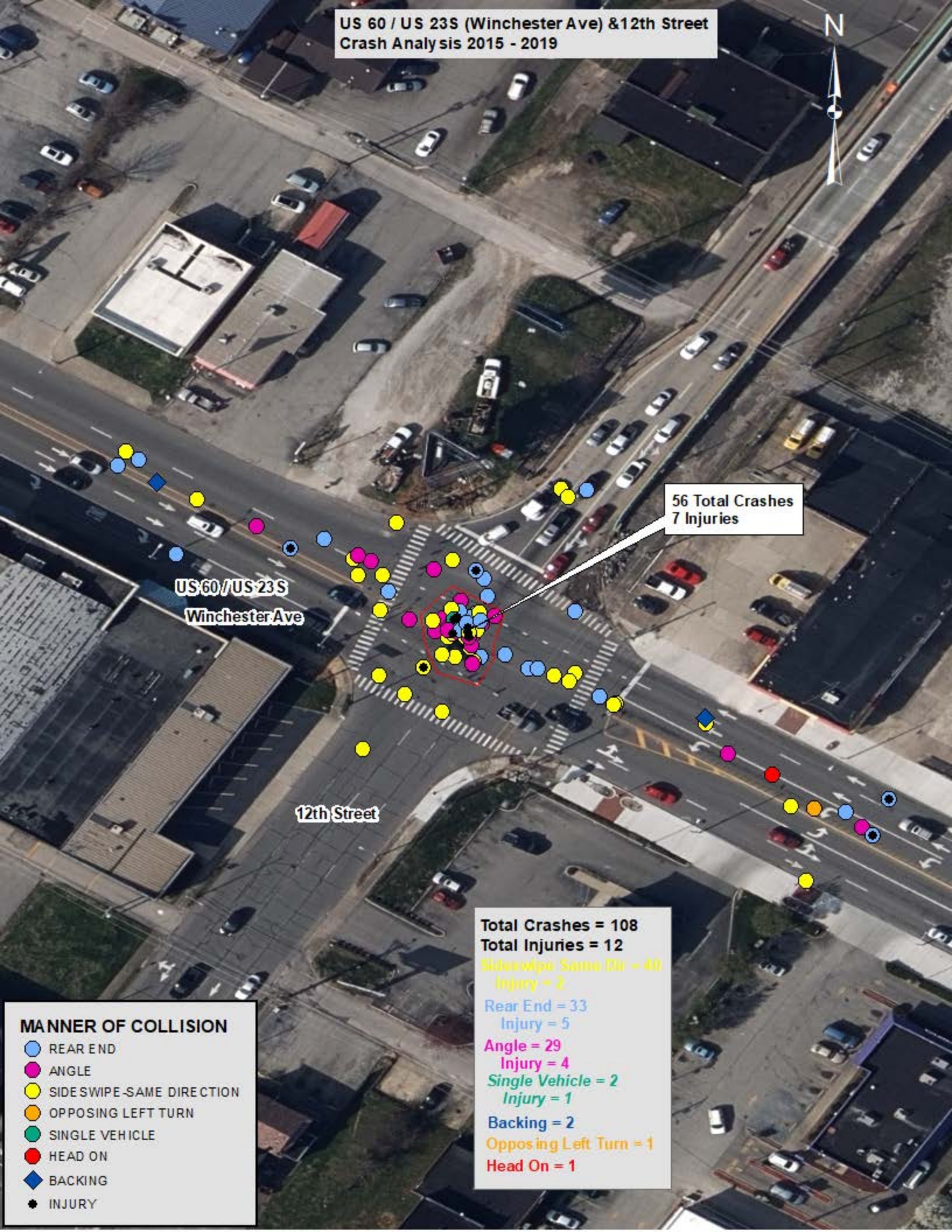
Injury = 2

Sideswipe Same Dir = 5

MANNER OF COLLISION

- REAR END
- ANGLE
- SIDESWIPE-SAME DIRECTION
- SINGLE VEHICLE
- INJURY

US 60 / US 23S (Winchester Ave) & 12th Street
Crash Analysis 2015 - 2019



US 60 / US 23S
Winchester Ave

12th Street

56 Total Crashes
7 Injuries

MANNER OF COLLISION

- REAR END
- ANGLE
- SIDE SWIPE - SAME DIRECTION
- OPPOSING LEFT TURN
- SINGLE VEHICLE
- HEAD ON
- BACKING
- INJURY

Total Crashes = 108

Total Injuries = 12

Side Swipe Same Dir = 40
Injury = 2

Rear End = 33
Injury = 5

Angle = 29
Injury = 4

Single Vehicle = 2
Injury = 1

Backing = 2

Opposing Left Turn = 1

Head On = 1

US 60 / US 23 (Winchester Ave) & 13th Street
Crash Analysis 2015 - 2019










91 Total Crashes
10 Injuries

13th Street
US 60

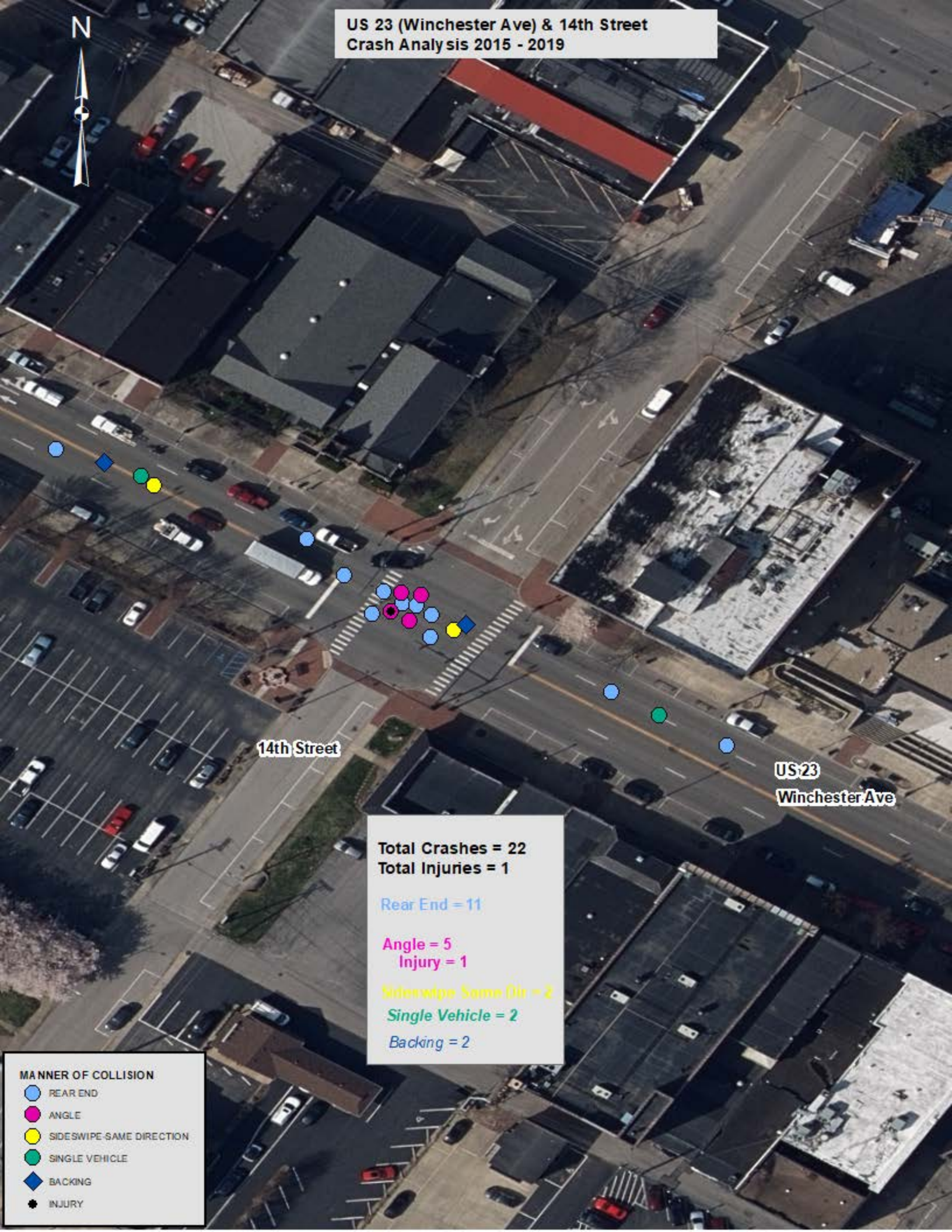
US 23
Winchester Ave

Total Crashes = 144
Total Injuries = 11
Sideswipe Same Dir = 86
Injury = 1
Angle = 30
Injury = 9
Rear End = 23
Single Vehicle = 3
Injury = 1
Backing = 1

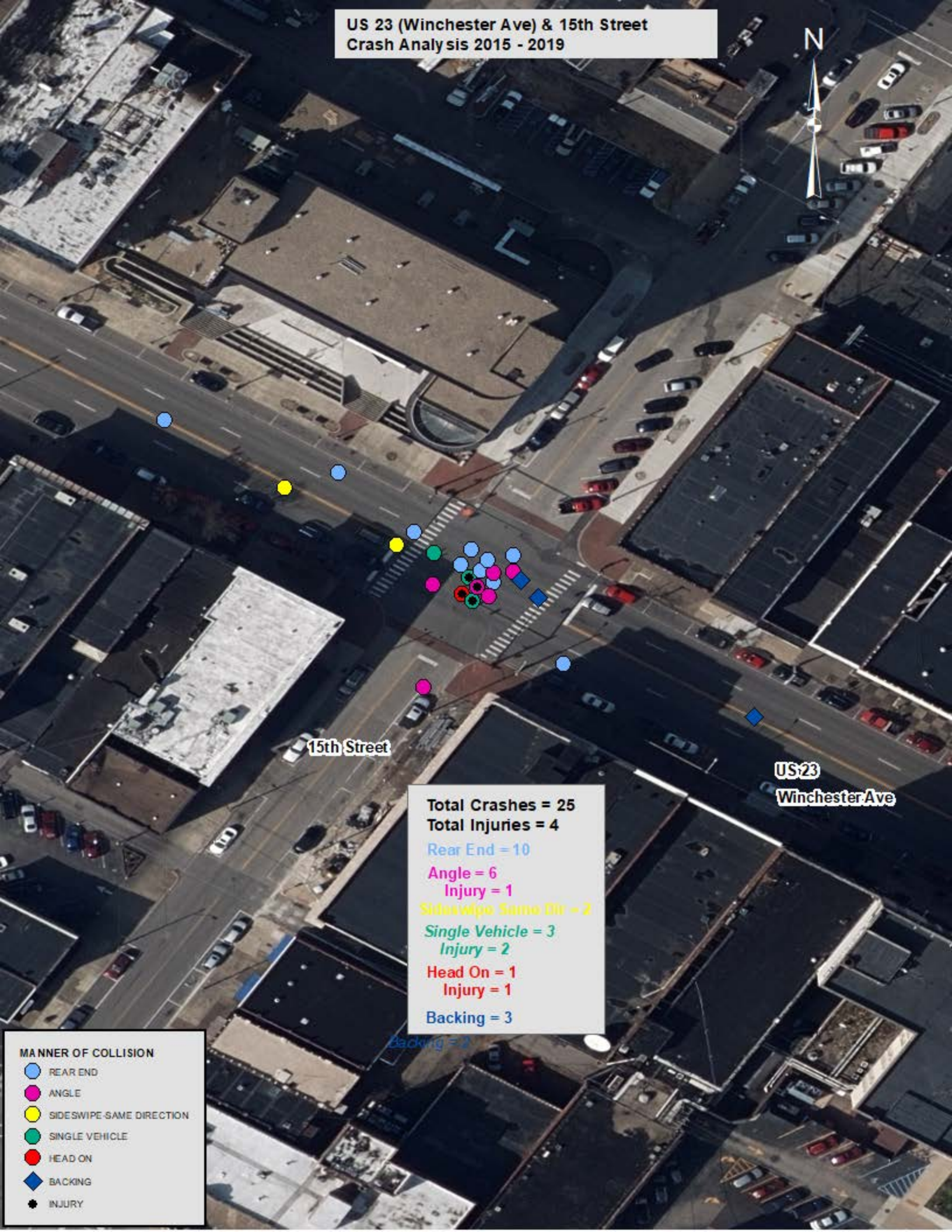
MANNER OF COLLISION

-  REAR END
-  ANGLE
-  SIDESWIPE SAME DIRECTION
-  SIDESWIPE OPPOSITE DIRECTION
-  SINGLE VEHICLE
-  BACKING
-  INJURY

US 23 (Winchester Ave) & 14th Street
Crash Analysis 2015 - 2019



US 23 (Winchester Ave) & 15th Street
Crash Analysis 2015 - 2019



15th Street

US 23
Winchester Ave

Total Crashes = 25
Total Injuries = 4

Rear End = 10

Angle = 6
Injury = 1

Sideswipe Same Dir = 2

Single Vehicle = 3
Injury = 2

Head On = 1
Injury = 1

Backing = 3

MANNER OF COLLISION

-  REAR END
-  ANGLE
-  SIDESWIPE-SAME DIRECTION
-  SINGLE VEHICLE
-  HEAD ON
-  BACKING
-  INJURY

US 23 (Winchester Ave) & 16th Street
Crash Analysis 2015 - 2019



16th Street

US 23
Winchester Ave

Total Crashes = 13
Total Injuries = 3
Rear End = 6
Injury = 3
Angle = 2
Sideswipe Same Dir = 2
Single Vehicle = 1
Backing = 1
Opposing Left = 1

MANNER OF COLLISION

-  REAR END
-  ANGLE
-  SIDESWIPE SAME DIRECTION
-  OPPOSING LEFT TURN
-  SINGLE VEHICLE
-  BACKING
-  INJURY

US 23 (Winchester Ave) & 17th Street
Crash Analysis 2015 - 2019



17th Street

US 23

Winchester Ave

Total Crashes = 9
Total Injuries = 0

Rear End = 4

Angle = 3

Single Vehicle = 2

MANNER OF COLLISION

- REAR END
- ANGLE
- SINGLE VEHICLE

US 23 (Winchester Ave) & 18th Street
Crash Analysis 2015 - 2019



18th Street

US 23

Winchester Ave

Total Crashes = 11

Total Injuries = 1

Rear End = 6

Injury = 1

Angle = 2

Sideswipe Same Dir = 1

Sideswipe Opp. Dir = 0

Single Vehicle = 1

MANNER OF COLLISION

- REAR END
- ANGLE
- SIDESWIPE-SAME DIRECTION
- SIDESWIPE-OPPOSITE DIRECTION
- SINGLE VEHICLE
- INJURY

US 23 (Winchester Ave) & 19th Street
Crash Analysis 2015 - 2019



19th Street

US 23

Winchester Ave

Total Crashes = 1
Total Injuries = 0

Angle = 1

MANNER OF COLLISION



ANGLE

US 23 (Winchester Ave) & 20th Street
Crash Analysis 2015 - 2019



19th Street

US 23

Winchester Ave

Total Crashes = 11

Total Injuries = 2

Rear End = 6

Injury = 1






Angle = 2

Injury = 1

Sideswipe Same Dir = 2

Head On = 1

MANNER OF COLLISION

-  REAR END
-  ANGLE
-  SIDESWIP-SAME DIRECTION
-  HEAD ON
-  INJURY

Ashland Downtown Transportation Study
Crash Analysis

| | 2015-2019 Most Recent | | | | | | | | | | | | | |
|---|-----------------------|-----------|--------|-------------|----------|----------------|--------------------|-------|----------------|---------------|---------|---------|--------|-------|
| Intersection | Major ADT | Minor ADT | MP | All Crashes | Rear End | Sideswipe Same | Sideswipe Opposite | Angle | Single Vehicle | Opposing Left | Head On | Backing | Injury | Fatal |
| US 23X (Winchester Ave) @ 18th Street | 7808 | 456 | 1.18 | 11 | 6 | 1 | 1 | 2 | 1 | 0 | 0 | 0 | 1 | 0 |
| US 23X (Winchester Ave) @ 17th Street | 8747 | 456 | 1.25 | 9 | 4 | 0 | 0 | 3 | 2 | 0 | 0 | 0 | 0 | 0 |
| US 23X (Winchester Ave) @ 16th Street | 9686 | 228 | 1.33 | 13 | 6 | 2 | 0 | 2 | 1 | 1 | 0 | 1 | 3 | 0 |
| US 23X (Winchester Ave) @ 15th Street | 9686 | 456 | 1.4 | 25 | 10 | 2 | 0 | 6 | 3 | 0 | 1 | 3 | 4 | 1 |
| US 23X (Winchester Ave) @ 14th Street | 9686 | 455 | 1.47 | 22 | 11 | 2 | 0 | 5 | 2 | 0 | 0 | 2 | 1 | 0 |
| US 23X (Winchester Ave) @ 13th Street | 17407 | 7184 | 1.551 | 144 | 23 | 86 | 1 | 30 | 3 | 0 | 0 | 1 | 11 | 0 |
| US 60 @ US 23X (Winchester Ave) | | | 12.182 | | | | | | | | | | | |
| US 23X (Winchester Ave) @ 12th Street | 18608 | 14948 | 12.202 | 108 | 33 | 40 | 0 | 29 | 2 | 1 | 1 | 2 | 12 | 0 |
| US 23X (Winchester Ave) @ 11th Street | 16022 | 2886 | 12.329 | 21 | 6 | 5 | 0 | 7 | 3 | 0 | 0 | 0 | 6 | 0 |
| US 23X (Winchester Ave) @ 10th Street | 13912 | 228 | 1.62 | 45 | 10 | 5 | 0 | 23 | 3 | 2 | 0 | 2 | 9 | 0 |
| US 23X (Winchester Ave) @ 9th Street | 13912 | 456 | 1.691 | 46 | 22 | 4 | 0 | 16 | 1 | 1 | 2 | 0 | 10 | 0 |
| US 23X (Winchester Ave) @ 8th Street | 13912 | 456 | 1.747 | 21 | 13 | 2 | 0 | 1 | 2 | 1 | 0 | 2 | 2 | 0 |
| US 23X (Winchester Ave) @ US 23 (Greenup Ave) North | 19484 | 6956 | 18.984 | 58 | 30 | 15 | 1 | 8 | 1 | 1 | 1 | 1 | 9 | 0 |
| US 23 (Greenup Ave) @ 17th Street | 13240 | 456 | 18.272 | 13 | 7 | 2 | 0 | 1 | 2 | 0 | 1 | 0 | 2 | 0 |
| US 23 (Greenup Ave) @ 16th Street | 13240 | 456 | 18.347 | 9 | 4 | 1 | 0 | 2 | 0 | 0 | 0 | 2 | 0 | 0 |
| US 23 (Greenup Ave) @ 15th Street | 13240 | 772 | 18.422 | 11 | 6 | 3 | 0 | 0 | 0 | 1 | 0 | 1 | 1 | 0 |
| US 23 (Greenup Ave) @ US 23X (Winchester Ave) South | 15591 | 7808 | 16.953 | 12 | 4 | 3 | 0 | 2 | 3 | 0 | 0 | 0 | 2 | 0 |
| US 23 (Greenup Ave) @ 29th Street | 13240 | 1908 | 17.272 | 15 | 6 | 1 | 0 | 6 | 0 | 2 | 0 | 0 | 3 | 0 |

Ashland Downtown Transportation Study
Crash Analysis

| | 2013-2017 KTC EEC | | | | | | | |
|---|------------------------|---|---|---|---|----|------------|-----------------|
| Intersection | All Crashes | K | A | B | C | O | EEC | District 9 Rank |
| US 23X (Winchester Ave) @ 18th Street | 11 | 0 | 0 | 1 | 1 | 9 | \$ 6,523 | 964 |
| US 23X (Winchester Ave) @ 17th Street | 8 | 0 | 0 | 0 | 0 | 8 | \$ - | 2240 |
| US 23X (Winchester Ave) @ 16th Street | 9 | 0 | 0 | 1 | 2 | 6 | \$ 33,269 | 366 |
| US 23X (Winchester Ave) @ 15th Street | 20 | 1 | 1 | 2 | 1 | 15 | \$ 734,340 | 22 |
| US 23X (Winchester Ave) @ 14th Street | 12 | 0 | 0 | 0 | 1 | 11 | \$ - | 2240 |
| US 23X (Winchester Ave) @ 13th Street | 49 | 0 | 0 | 3 | 2 | 44 | \$ 447,493 | 38 |
| US 60 @ US 23X (Winchester Ave) | 64 | 0 | 0 | 4 | 5 | 55 | \$ 244,872 | 99 |
| US 23X (Winchester Ave) @ 12th Street | 53 | 0 | 0 | 2 | 5 | 46 | \$ - | 2240 |
| US 23X (Winchester Ave) @ 11th Street | Not in EEC Spreadsheet | | | | | | | |
| US 23X (Winchester Ave) @ 10th Street | 25 | 0 | 1 | 2 | 3 | 19 | \$ 439,860 | 44 |
| US 23X (Winchester Ave) @ 9th Street | 36 | 0 | 0 | 3 | 3 | 30 | \$ 263,323 | 93 |
| US 23X (Winchester Ave) @ 8th Street | 19 | 0 | 1 | 0 | 1 | 17 | \$ 468,929 | 32 |
| US 23X (Winchester Ave) @ US 23 (Greenup Ave) North | 34 | 0 | 0 | 1 | 1 | 32 | \$ - | 2240 |
| US 23 (Greenup Ave) @ 17th Street | 8 | 0 | 0 | 1 | 0 | 7 | \$ - | 2240 |
| US 23 (Greenup Ave) @ 16th Street | 7 | 0 | 0 | 0 | 0 | 7 | \$ - | 2240 |
| US 23 (Greenup Ave) @ 15th Street | 11 | 0 | 0 | 1 | 2 | 8 | \$ - | 2240 |
| US 23 (Greenup Ave) @ US 23X (Winchester Ave) South | 3 | 0 | 0 | 0 | 1 | 2 | \$ - | 2240 |
| US 23 (Greenup Ave) @ 29th Street | 13 | 0 | 0 | 1 | 1 | 11 | \$ - | 2240 |

same intersection